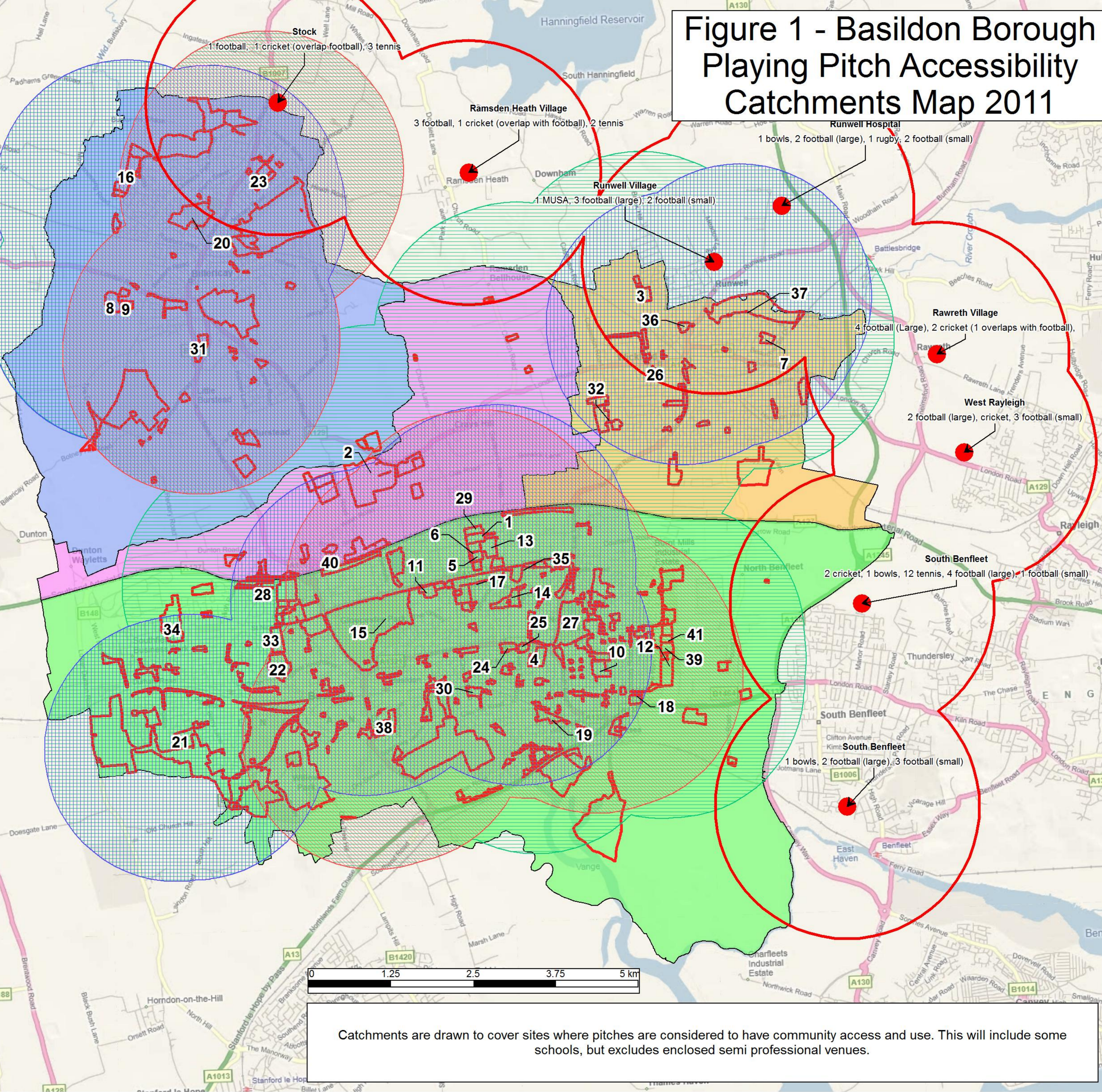


Figure 1 - Basildon Borough Playing Pitch Accessibility Catchments Map 2011

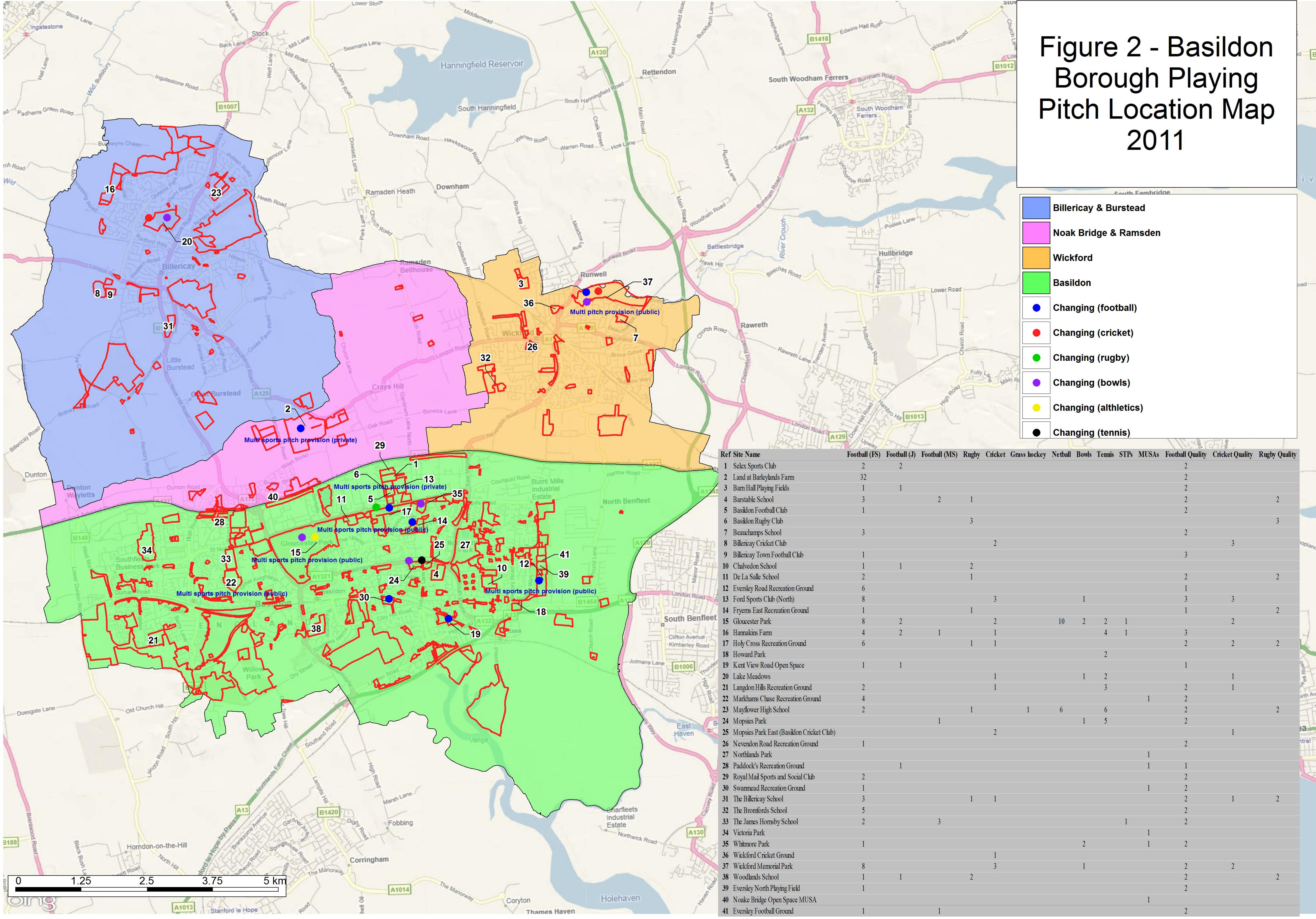
- Billericay & Burstead
- Noak Bridge & Ramsden
- Wickford
- Basildon
- Open space (including sports sites)
- 2000m to football venue
- 2000m to cricket venue
- 2000m to rugby venue
- External sites
- 2000m to external site

Ref	Site Name	Football(FS)	Football(D)	Football(MS)	Rugby	Cricket	Grass hockey	Netball	Bowls	Tennis	STPs	MUSAs
1	Sdex Sports Club	2	2									
2	Land at Barclays Farm	32										
3	Barn Hall Playing Fields	1	1									
4	Barstable School	3		2	1							
5	Basildon Football Club	1										
6	Basildon Rugby Club					3						
7	Beauchamps School	3										
8	Billericay Cricket Club					2						
9	Billericay Town Football Club	1										
10	Chalvedon School	1	1		2							
11	De La Salle School	2			1							
12	Eversley Road Recreation Ground	6										
13	Ford Sports Club (North)	8				3		1				
14	Fryens East Recreation Ground	1			1							
15	Gloucester Park	8	2			2		10	2	2	1	
16	Hanekins Farm	4	2	1		1				4	1	
17	Holy Cross Recreation Ground	6			1	1						
18	Howard Park										2	
19	Kent View Road Open Space	1	1									
20	Lake Meadows					1			1	2		
21	Langdon Hills Recreation Ground	2				1				3		
22	Markhams Chase Recreation Ground	4										1
23	Mayflower High School	2			1	1		1	6	6		
24	Mopsies Park			1						1	5	
25	Mopsies Park East (Basildon Cricket Club)					2						
26	Nevedon Road Recreation Ground	1										
27	Northlands Park										1	
28	Paddock's Recreation Ground		1								1	
29	Royal Mail Sports and Social Club	2										
30	Swanmead Recreation Ground	1										1
31	The Billericay School	3				1	1					
32	The Bromfords School	5										
33	The James Hornsby School	2		3							1	
34	Victoria Park	1									1	
35	Whimore Park	1							2		1	
36	Wickford Cricket Ground					1						
37	Wickford Memorial Park	8				3			1			
38	Woodlands School	1	1		2							
39	Eversley North Playing Field	1										
40	Noake Bridge Open Space MUSA											1
41	Eversley Football Ground	1		1								



Catchments are drawn to cover sites where pitches are considered to have community access and use. This will include some schools, but excludes enclosed semi professional venues.

Figure 2 - Basildon Borough Playing Pitch Location Map 2011



Legend

- Billericay & Burstead
- Noak Bridge & Ramsden
- Wickford
- Basildon
- Changing (football)
- Changing (cricket)
- Changing (rugby)
- Changing (bowls)
- Changing (athletics)
- Changing (tennis)

Ref	Site Name	Football (FS)	Football (J)	Football (MS)	Rugby	Cricket	Grass hockey	Netball	Bowls	Tennis	STPs	MUSAs	Football Quality	Cricket Quality	Rugby Quality
1	Selex Sports Club	2	2										2		
2	Land at Barleylands Farm	32											2		
3	Barn Hall Playing Fields	1	1										2		2
4	Barstable School	3		2	1								2		
5	Basildon Football Club	1											2		
6	Basildon Rugby Club				3										3
7	Beauchamps School	3											2		
8	Billericay Cricket Club					2								3	
9	Billericay Town Football Club	1											3		
10	Chalvedon School	1	1		2								2		2
11	De La Salle School	2			1								2		
12	Eversley Road Recreation Ground	6											1		
13	Ford Sports Club (North)	8											3	3	
14	Fryems East Recreation Ground	1			1								1		2
15	Gloucester Park	8	2			2		10	2	2	1		3	2	2
16	Hammakins Farm	4	2	1		1				4	1		3		
17	Holy Cross Recreation Ground	6			1	1							2	2	2
18	Howard Park									2					
19	Kent View Road Open Space	1	1										1		
20	Lake Meadows					1			1	2				1	
21	Langdon Hills Recreation Ground	2				1				3			2	1	
22	Markhams Chase Recreation Ground	4										1	2		
23	Mayflower High School	2			1		1	6		6			2		2
24	Mopsies Park				1				1	5			2		
25	Mopsies Park East (Basildon Cricket Club)					2								1	
26	Nevendon Road Recreation Ground	1											2		
27	Northlands Park											1	1		
28	Paddock's Recreation Ground		1										2		
29	Royal Mail Sports and Social Club	2											2		
30	Swanmead Recreation Ground	1										1	2		
31	The Billericay School	3				1	1						2	1	2
32	The Bromfords School	5											2		
33	The James Homsby School	2			3						1		2		
34	Victoria Park											1	2		
35	Whimore Park	1							2			1	2		
36	Wickford Cricket Ground					1									
37	Wickford Memorial Park	8				3			1				2	2	
38	Woodlands School	1	1		2								2		2
39	Eversley North Playing Field	1											2		
40	Noake Bridge Open Space MUSA											1			
41	Eversley Football Ground	1		1									2		

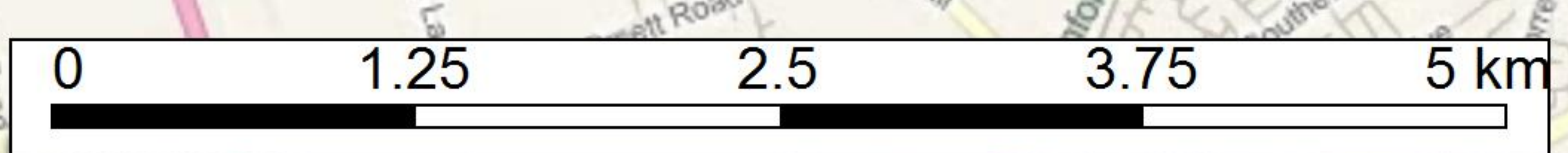


Figure 3 - Basildon Borough Football Pitch Quality Map 2011

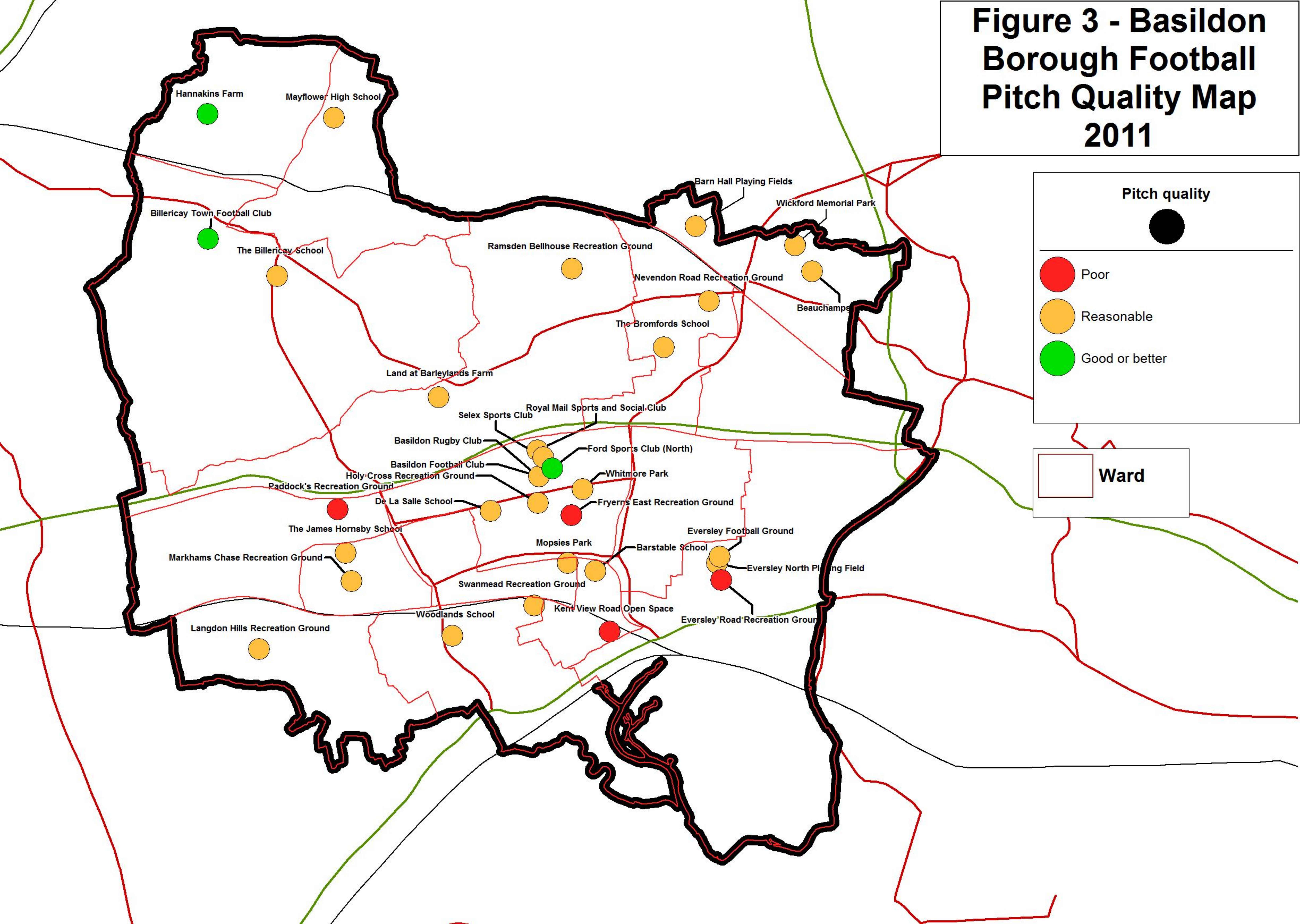


Figure 4 – Basildon Borough Football Pitch Numbers (Adult & Juniors) Map 2011

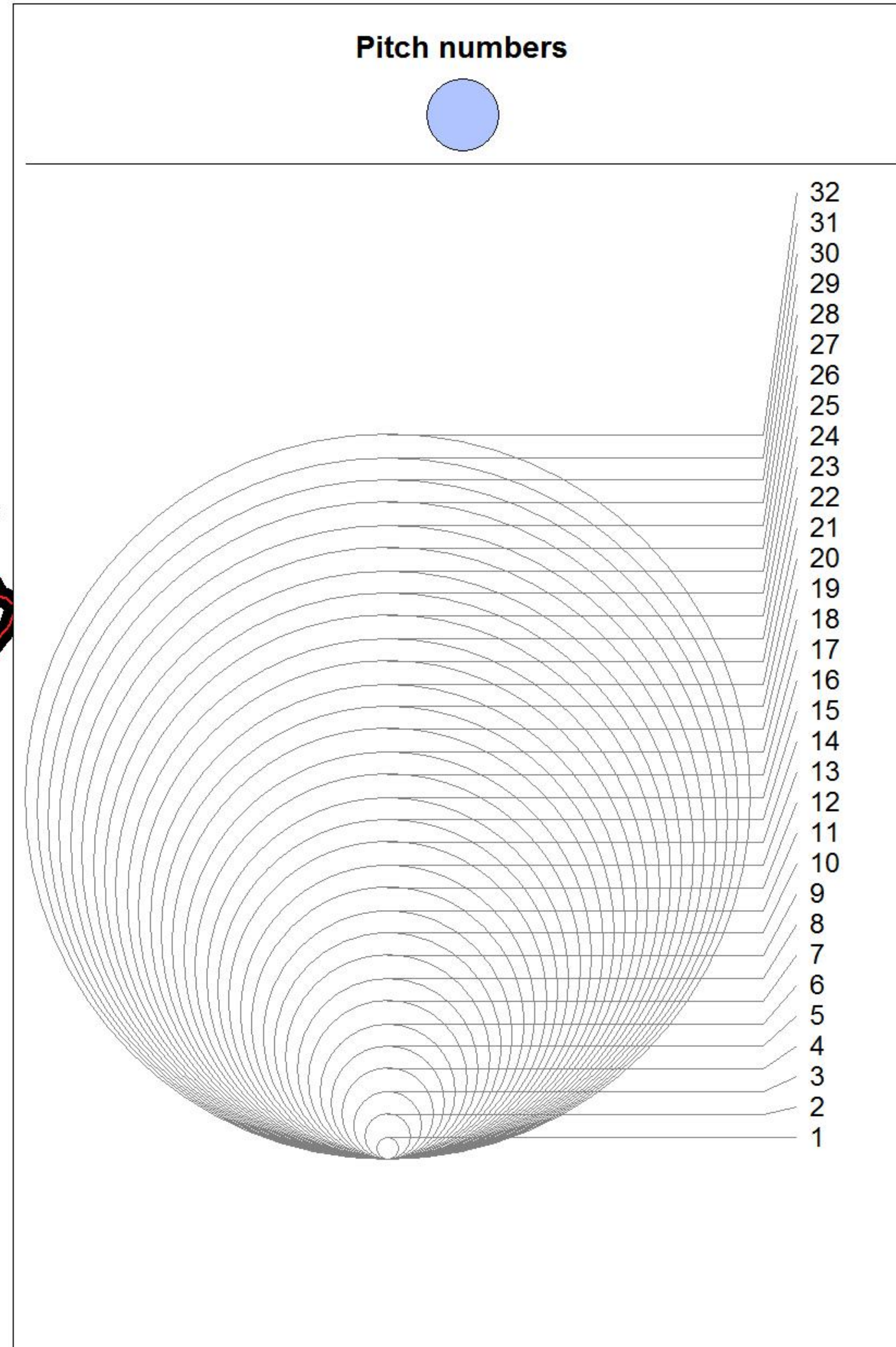
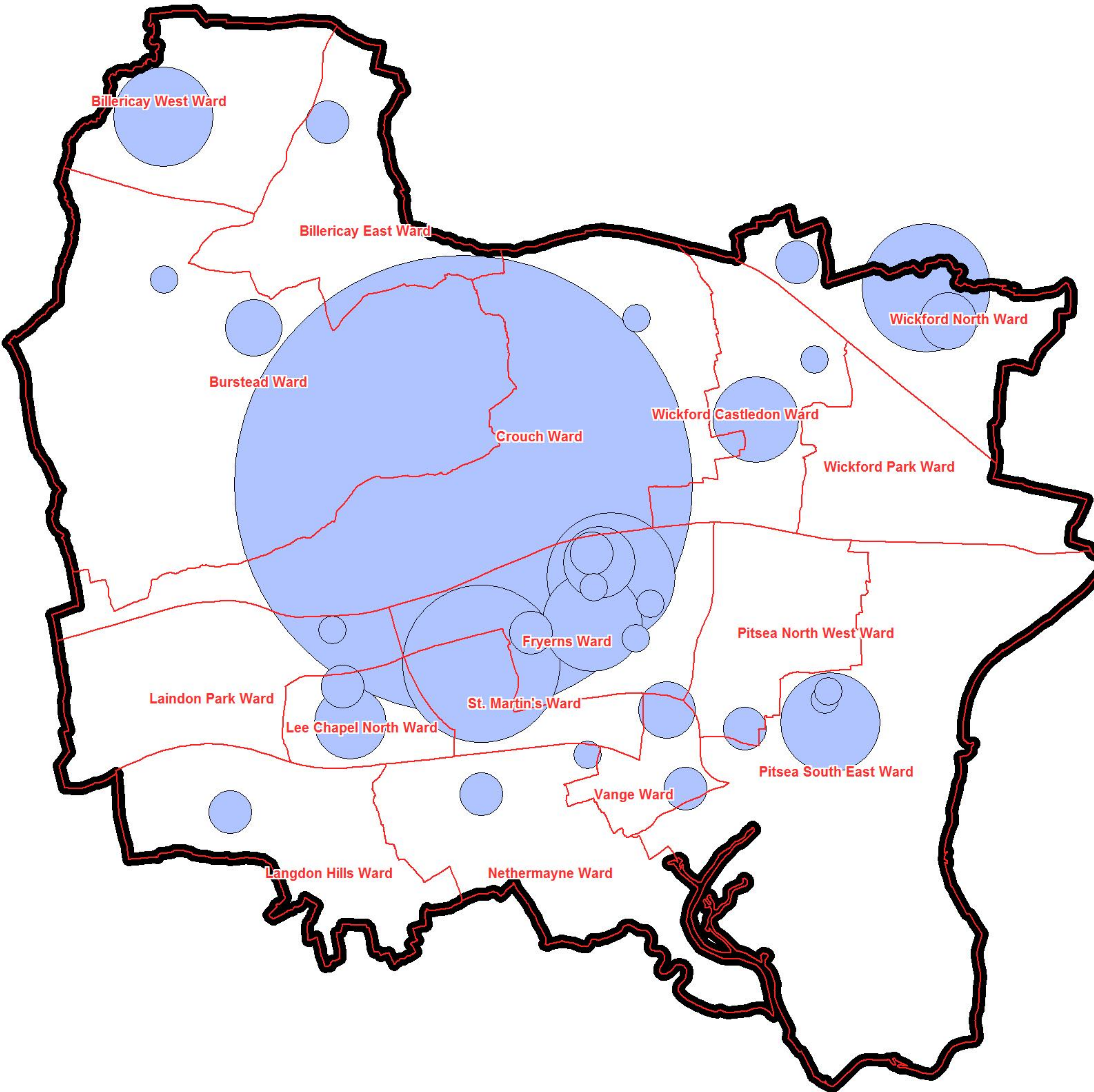
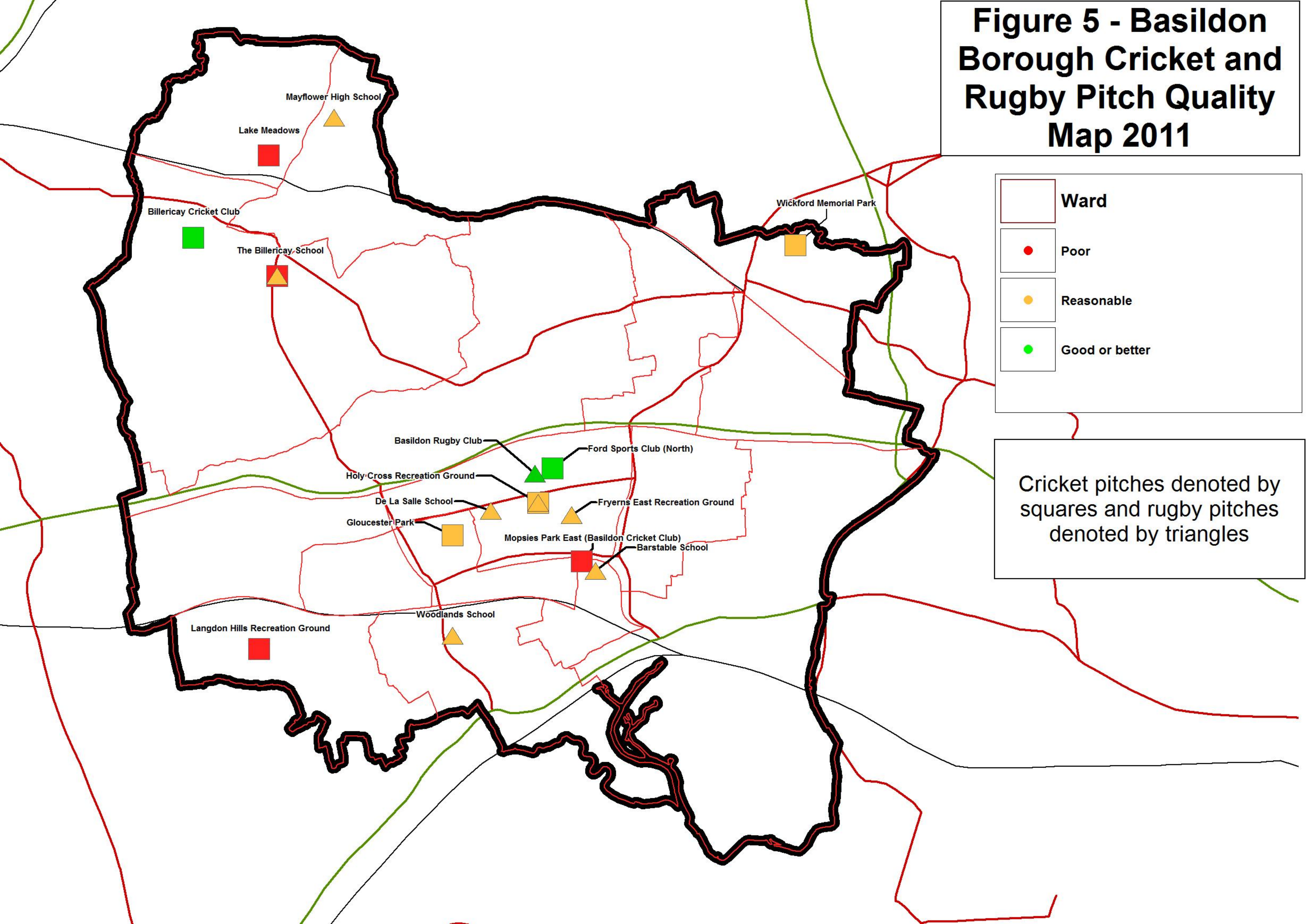


Figure 5 - Basildon Borough Cricket and Rugby Pitch Quality Map 2011



Ward

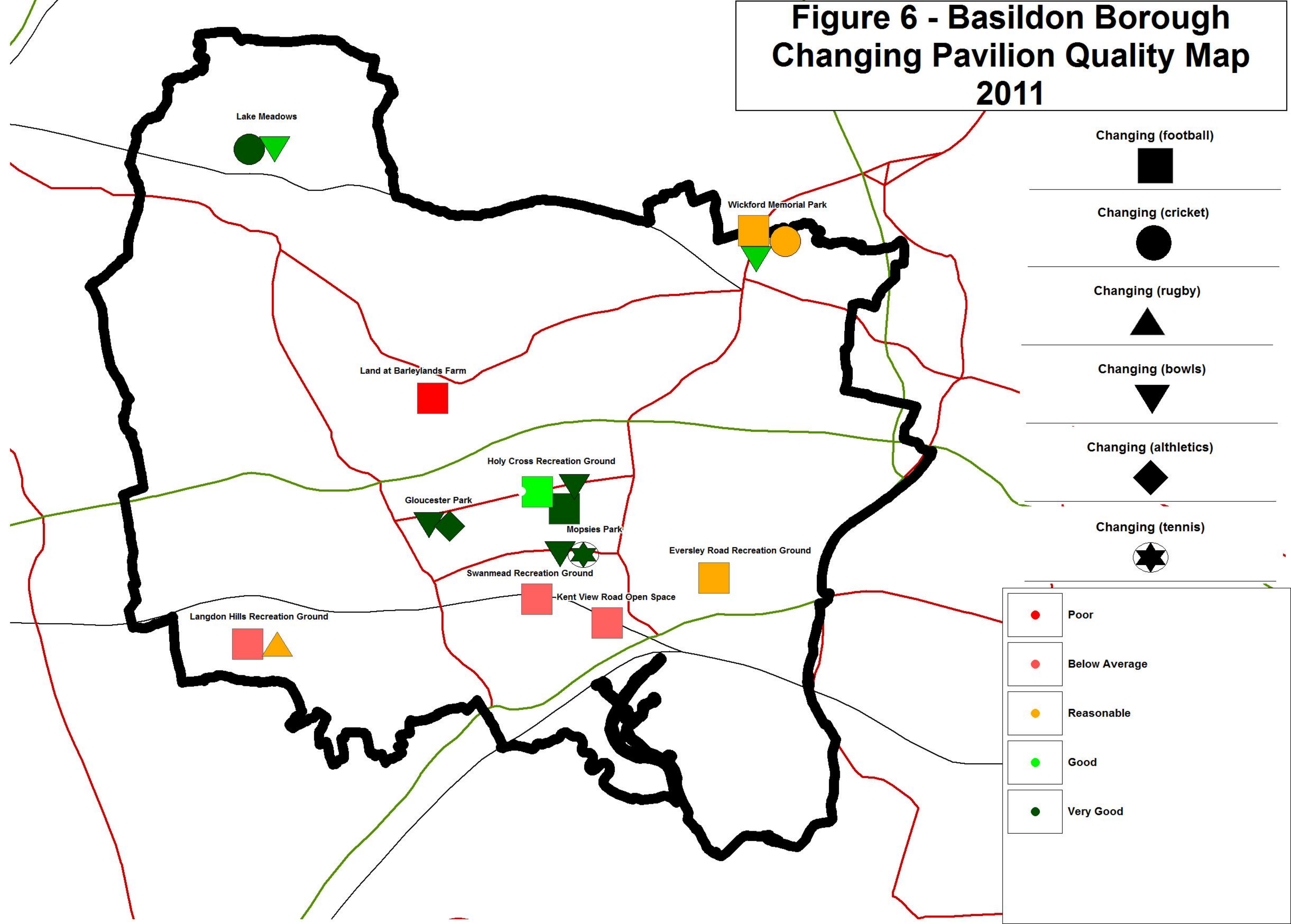
Poor

Reasonable

Good or better

Cricket pitches denoted by squares and rugby pitches denoted by triangles

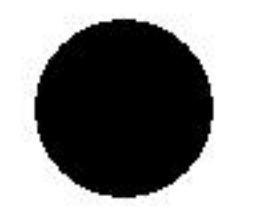
Figure 6 - Basildon Borough Changing Pavilion Quality Map 2011



Changing (football)



Changing (cricket)



Changing (rugby)



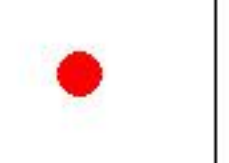
Changing (bowls)



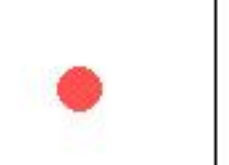
Changing (athletics)



Changing (tennis)



Poor



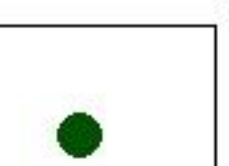
Below Average



Reasonable



Good



Very Good

