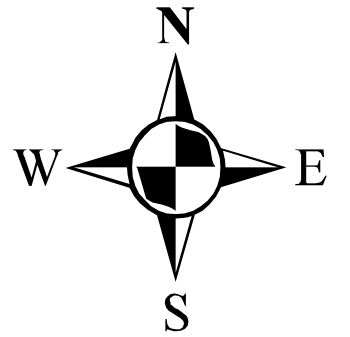
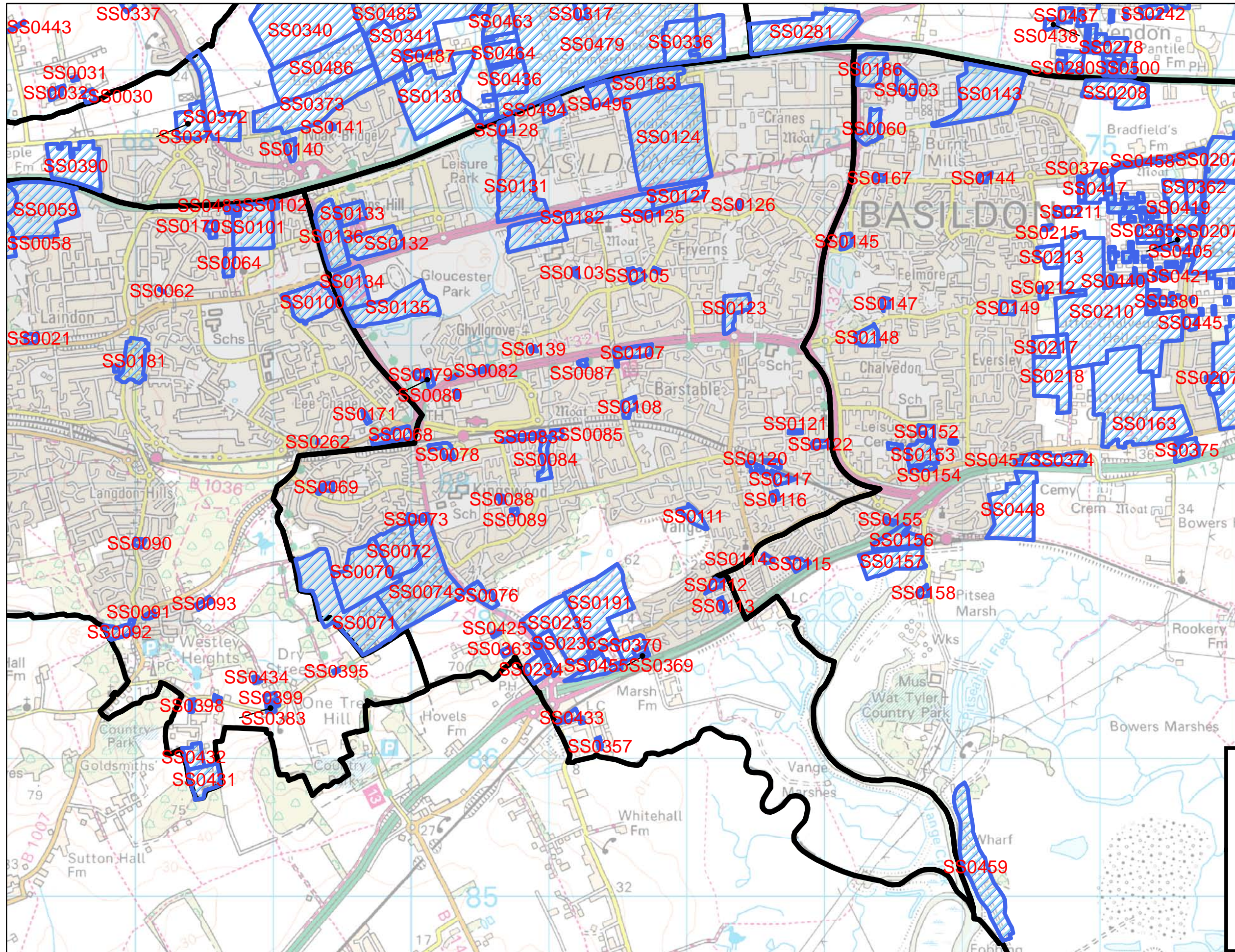



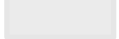


SHLAA Overview Areas Basildon Central



Legend

-  SHLAA site numbers
-  Overview Areas
-  Basildon Borough
-  Settlement Areas

BASILDON CENTRAL	
SITE REF	Address
SS0069	Open Space and Garages at rear of 1-53 Paprills
SS0070	Land West of Basildon College, North of Hospital
SS0071	Land North of Dry Street ASR
SS0072	Thurrock and Basildon College
SS0073	Rear of 6-38 Eastley
SS0074	Land adjacent to Dry Street an Nethermayne
SS0076	LandNorth of Nethermaybe, South of Toucan Way
SS0077	Church Walk House
SS0078	Cherrydown West, Ashdon Way Car Park
SS0079	Gloucester Park Swimming Pool and cP
SS0080	Land at East of Gloucester Park Swimming Pool
SS0081	Community Resource Centre, The Gore/ Broadmayne
SS0082	Land oppostie 54-84 Audley Way
SS0083	Land East of Clay Hill Road, North of Witchards
SS0084	Community Hall off Witchards and open space
SS0085	Land at Gun Hill Place
SS0087	Open Space and Garages at rear of 2-12 Priors Cl
SS0088	Open Space rear of 8-34 Codenham Straight
SS0089	Open space rear of 2-28 Wynters
SS0103	Open Space adj to 26 Scarletts
SS0105	Ashleigh Centre and Fryerns Library
SS0106	Open Space opp 2-12 Quilters Straight
SS0107	Land at Long Riding,North of Napier
SS0108	Open Space opp 113-151 Church Road, Vange
SS0111	Open Space and Comm Centre, Vange Hill Drive
SS0112	Open Space between London Road and Moss Close
SS0113	Open space ro 1-47 Goldings Cresent
SS0116	Land inc centre at 26-76 Kent View Road
SS0117	Land at the N of Kent View Road
SS0118	Open Space, N of Bardfield
SS0119	Riverton Hall Bardfield OS
SS0120	OS ro 26-54 Dencourt Crescent
SS0121	OS and garages ro 5-21 Marney Drive
SS0122	OS 5-25 and 83 Meredene
SS0123	Former Fryerns School and Social Services
SS0124	Gardiners Lane South
SS0125	Land adj to Southwoods Court, Great Spenders
SS0126	Land north of Hardy Road,
SS0127	Pitches s of Cranes farm Road
SS0128	Land at N and W of Unit Waterfront Walk
SS0131	Festival Leisure Park
SS0132	Land bound by Miles Gray Road, Luckyn Lane#
SS0133	Yardley Business Park
SS0134	Land NW of Gloucester Park
SS0135	Gloucester Park
SS0136	Pipps Hill Retail Park
SS0139	OS to rear of 22-30 The Fold
SS0182	Land adj to S side of Cranes Farm Road,
SS0183	Mayflower Retail Park, Inc Tesco Store
SS0191	Land at rear of Vange Primary School,
SS0233	Land East of Nethermayne, near Five Bells
SS0234	Land West of Nethermayne, near five bells
SS0235	Land at Thompkins Farm,
SS0236	Land at Basildon Zoo, London Road

SS0356	Land to the North of the Glen, Brook Drive
SS0357	Land South of the Glen, Brook Drive
SS0363	Land between Thames View and Brooklands
SS0368	Land adj Empire House, Brickfield Road, Vange
SS0369	Empire House, Brickfield Road
SS0370	Land at junction of London Road and Brickfield Rod
SS0425	Land at junction of Hawkesbury Bush Lane
SS0433	The Lodge, North of Crooked Brook
SS0455	Land to the South of Basildon zoon
SS0494	Site 16a Southend Arterial Road
SS0495	Site 16c Southend Arterial Road